



LUND UNIVERSITY
DIABETES CENTRE



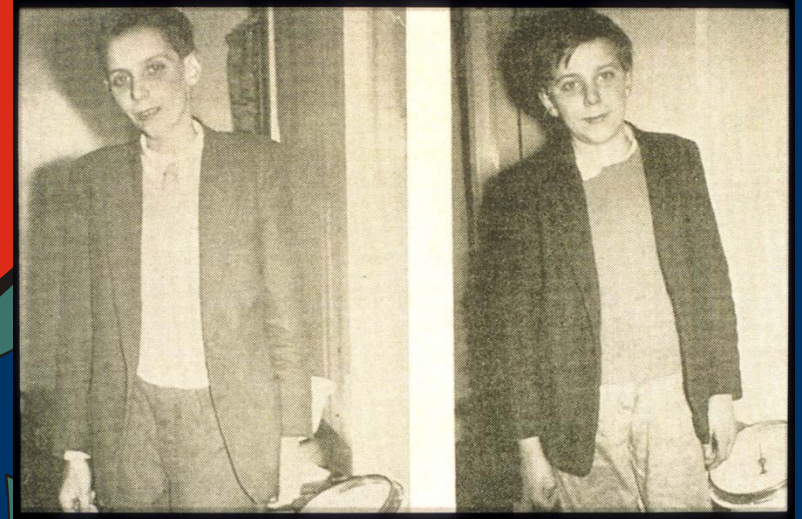
Innovative Medicines Initiative

Precision medicine: the way forward

Leif Groop
Lund University Diabetes Centre

1921

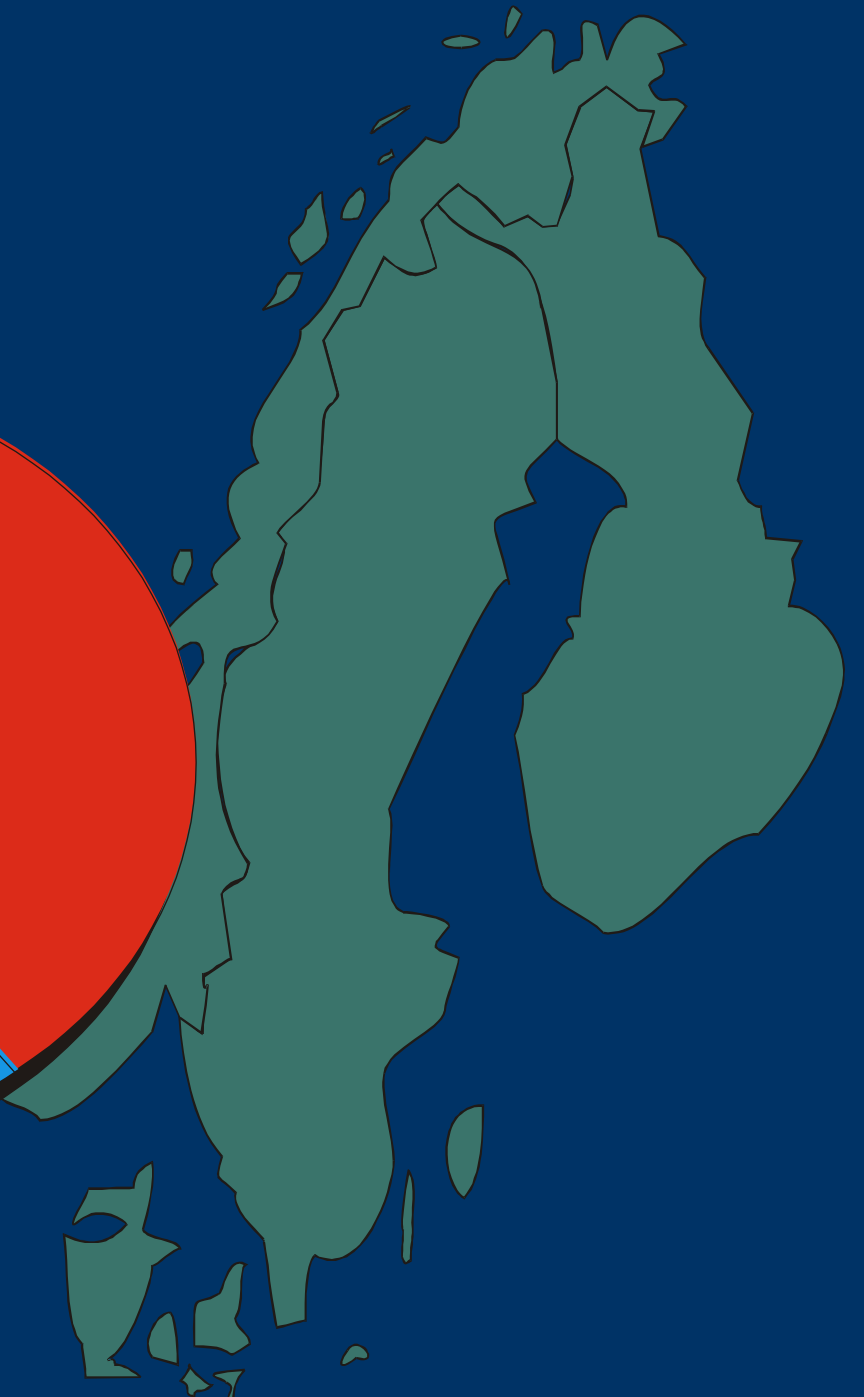
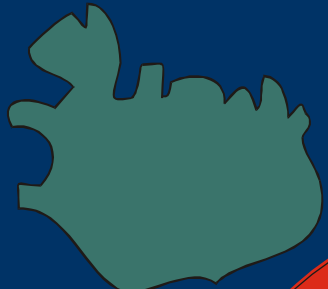
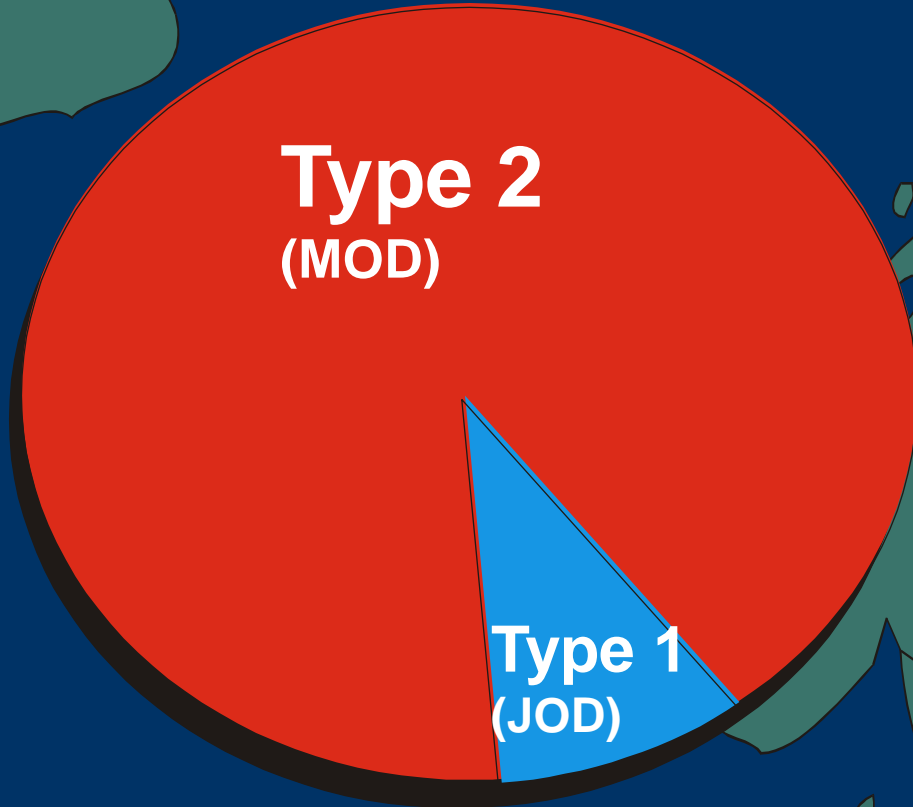
Diabetes mellitus



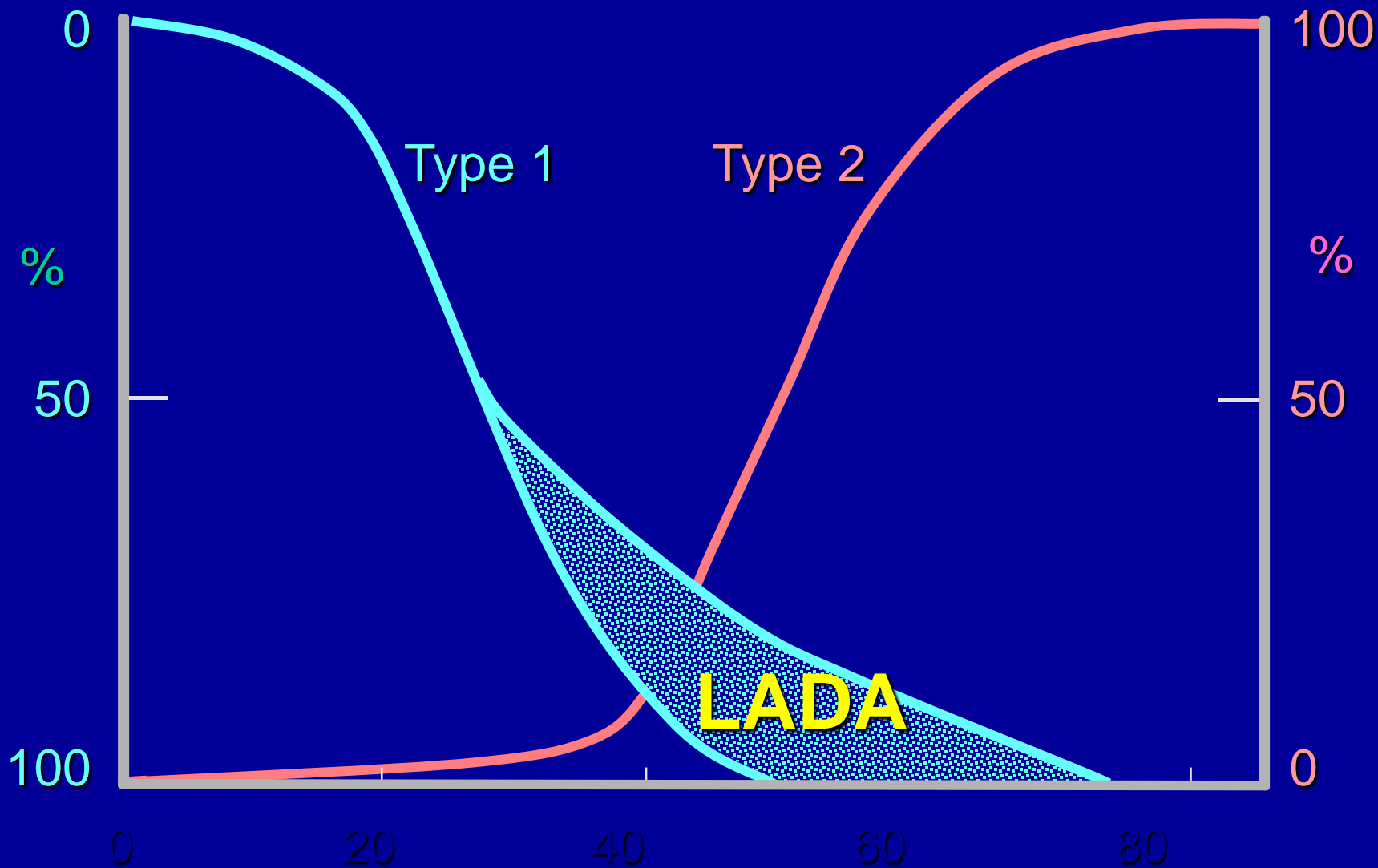
1960

Type 2
(MOD)

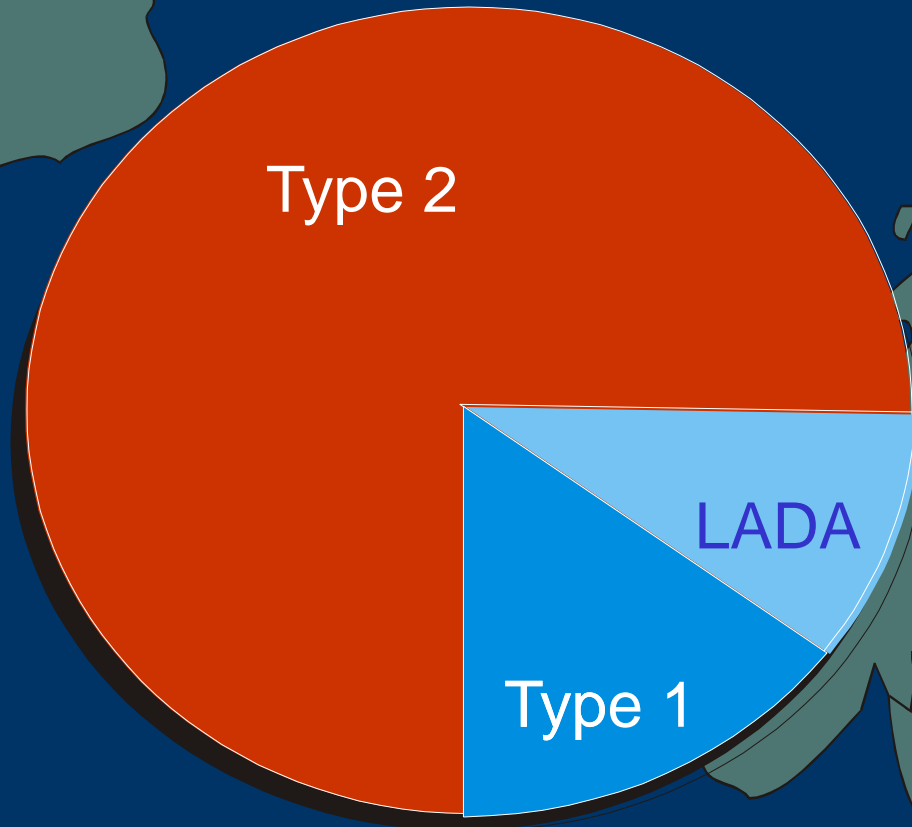
Type 1
(JOD)



Cumulative prevalence of diabetes

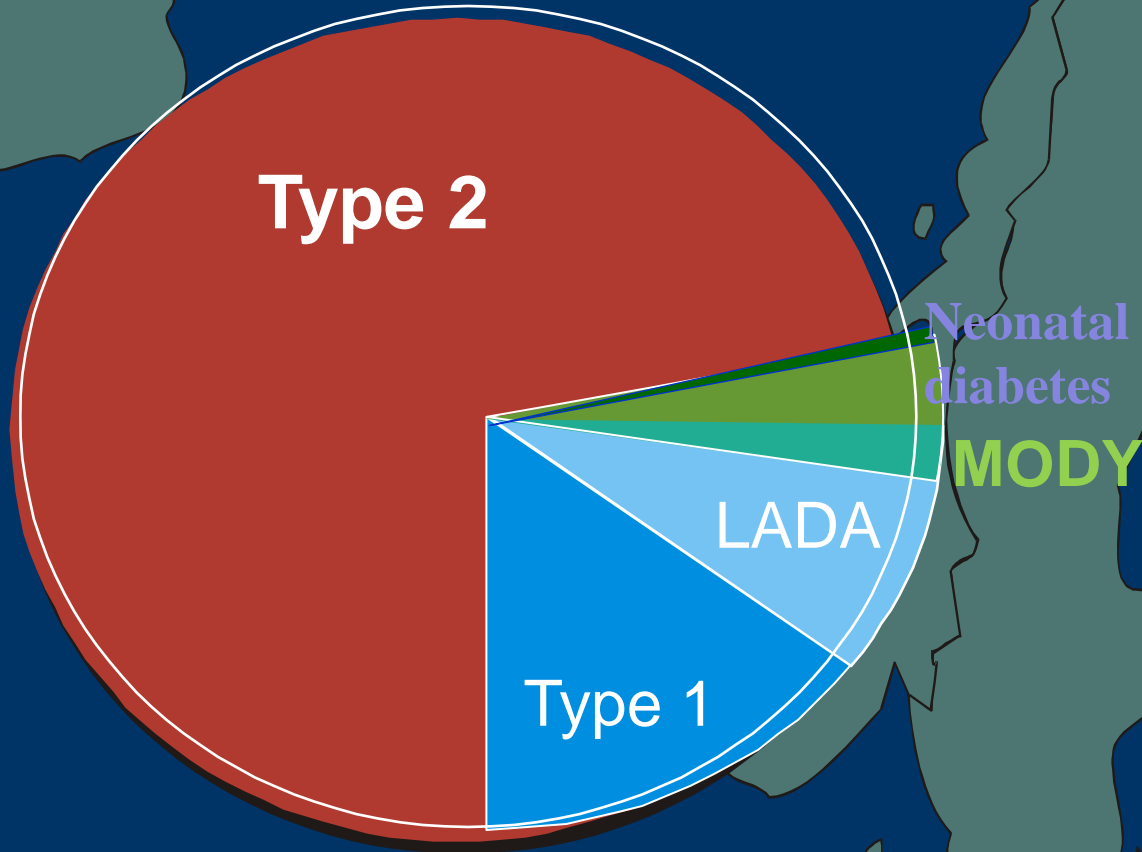


1990



LADA: Latent autoimmune diabetes in adults

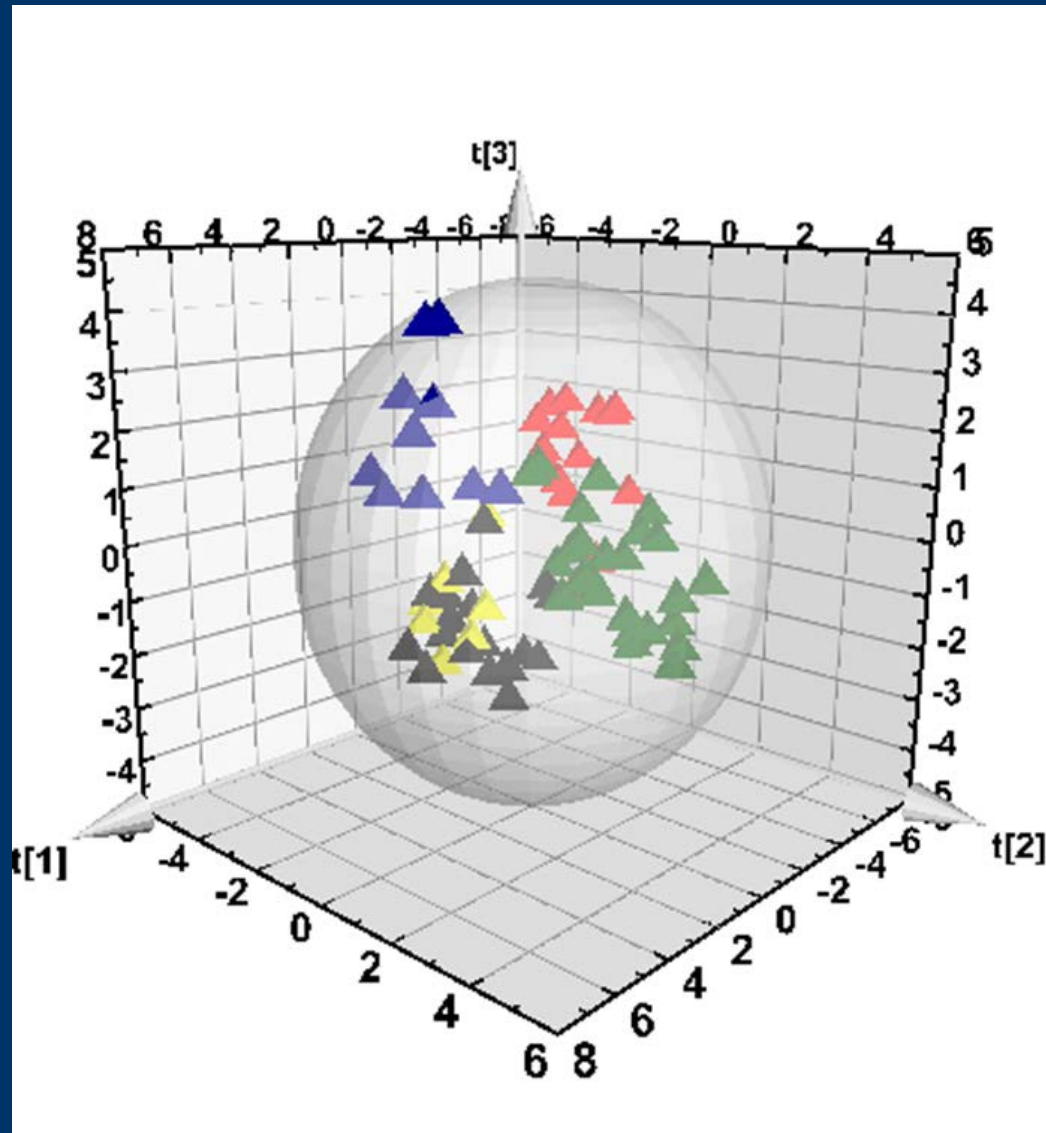
2000



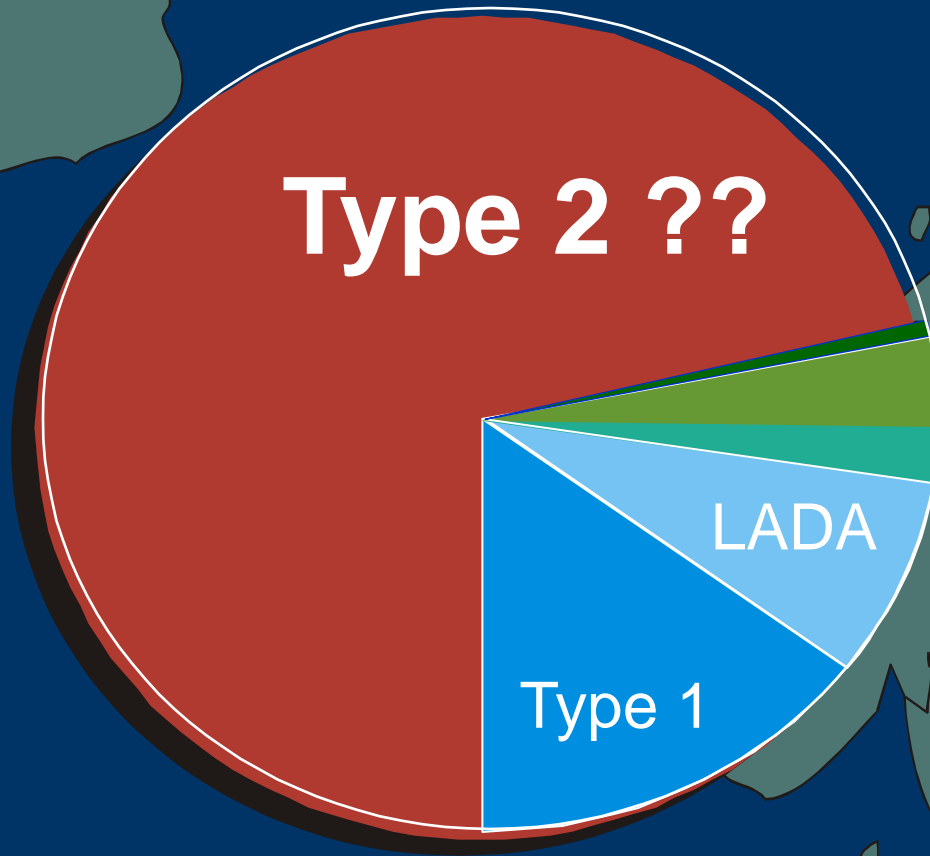
ANNIKA – after 19 years with 20,000 unnecessary insulin injections she does not need any treatment after the diagnosis of glucokinase- induced diabetes (MODY2) was made



Metabolically MODY 2 (GCK) is indistinguishable from healthy individuals – a compensated metabolic state



2014





10500

700

ANDIS/ANDIU

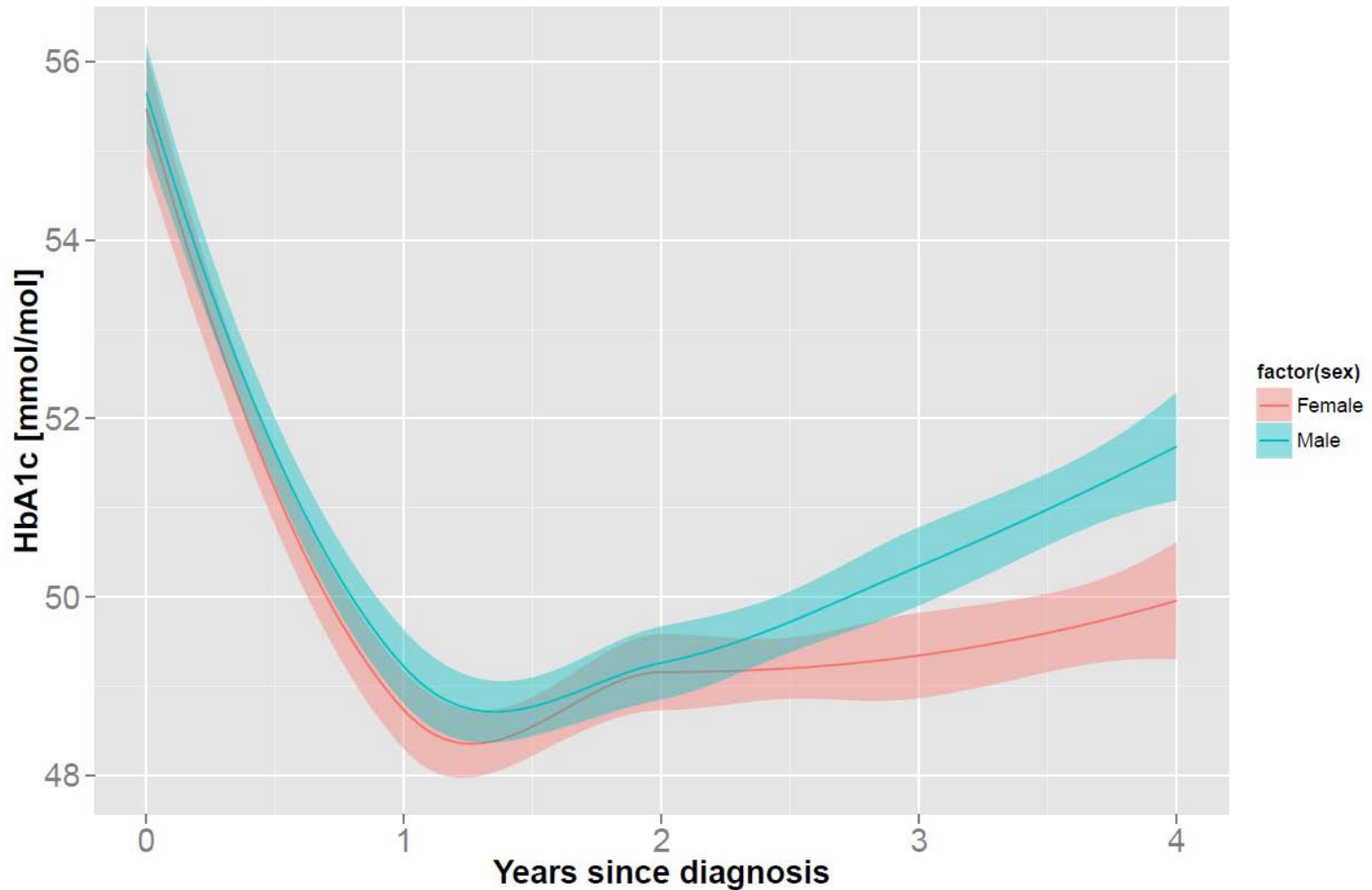
All New Diabetics In Scania/Uppsala

5009

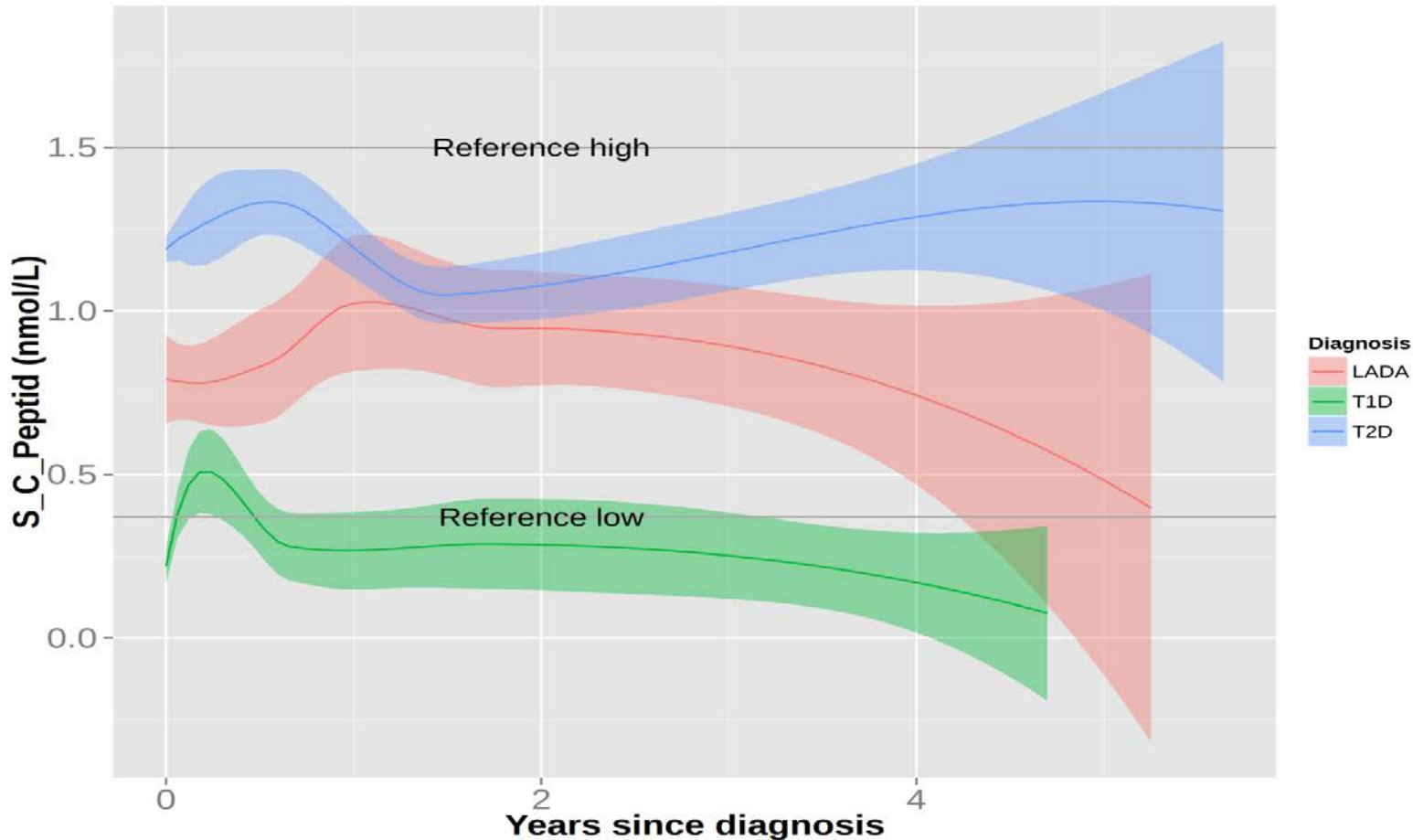
DIREVA

Diabetes REgistry VAasa

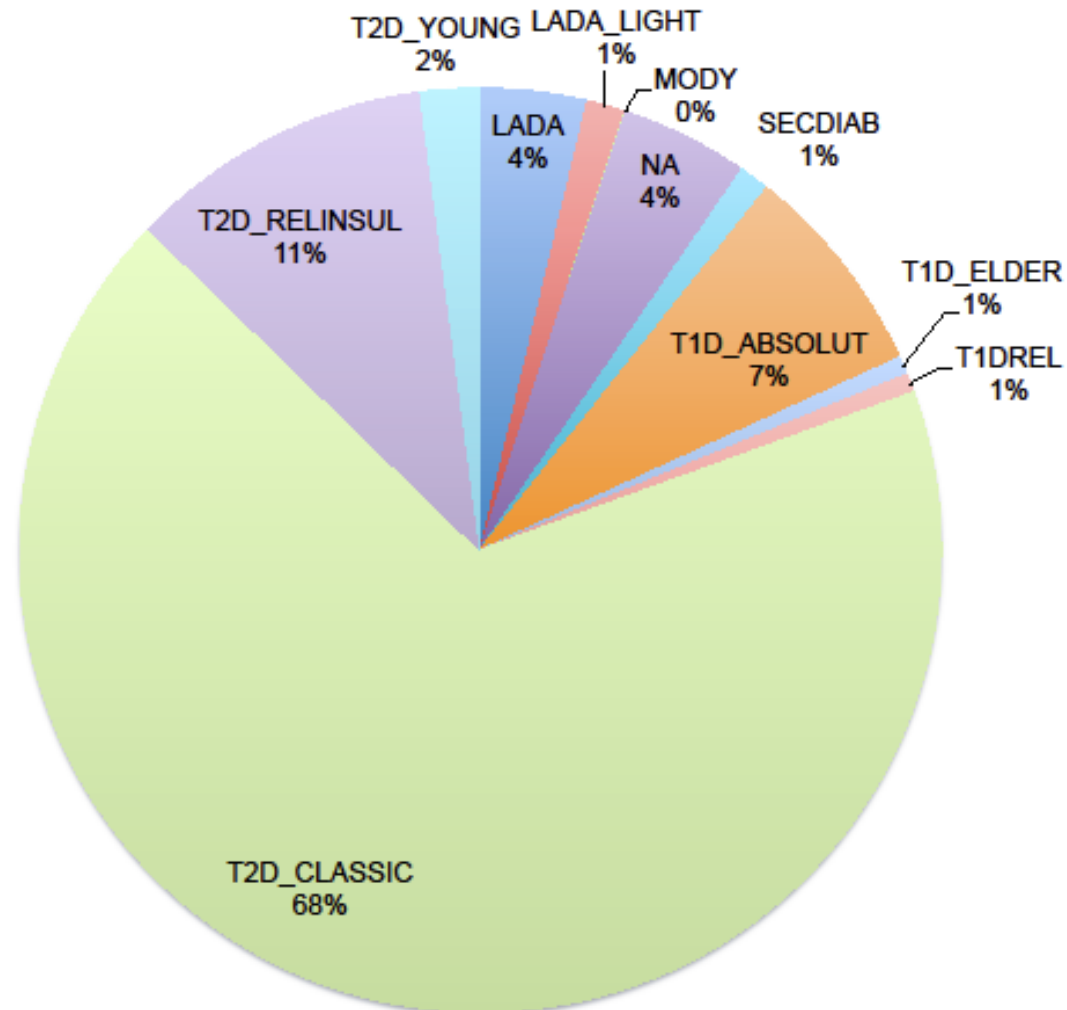
Differences in metabolic control between males and females



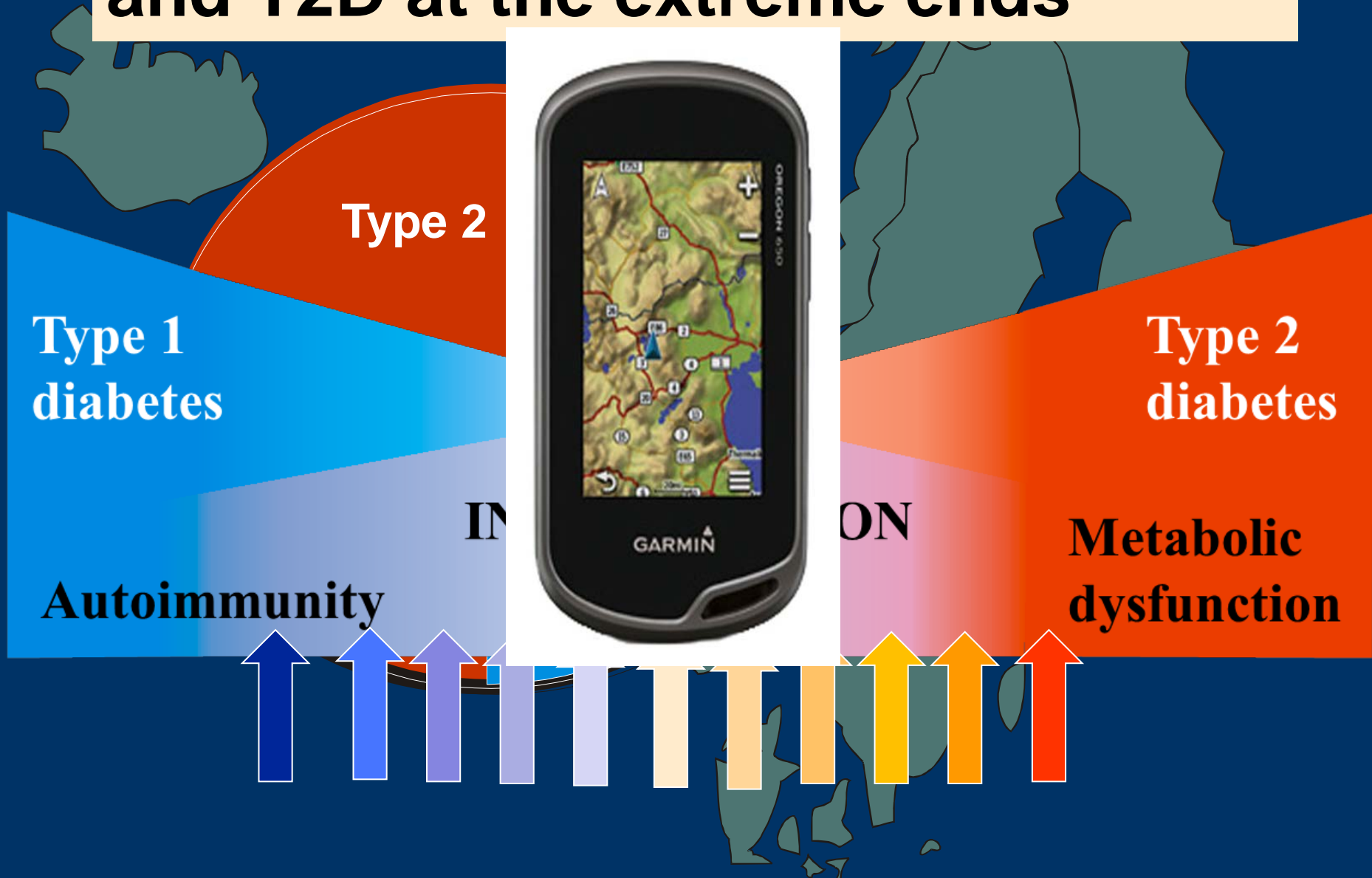
Insulin secretion in diabetic subgroups



The diabetes spectrum is changing



Diabetes is a continuum with T1D and T2D at the extreme ends



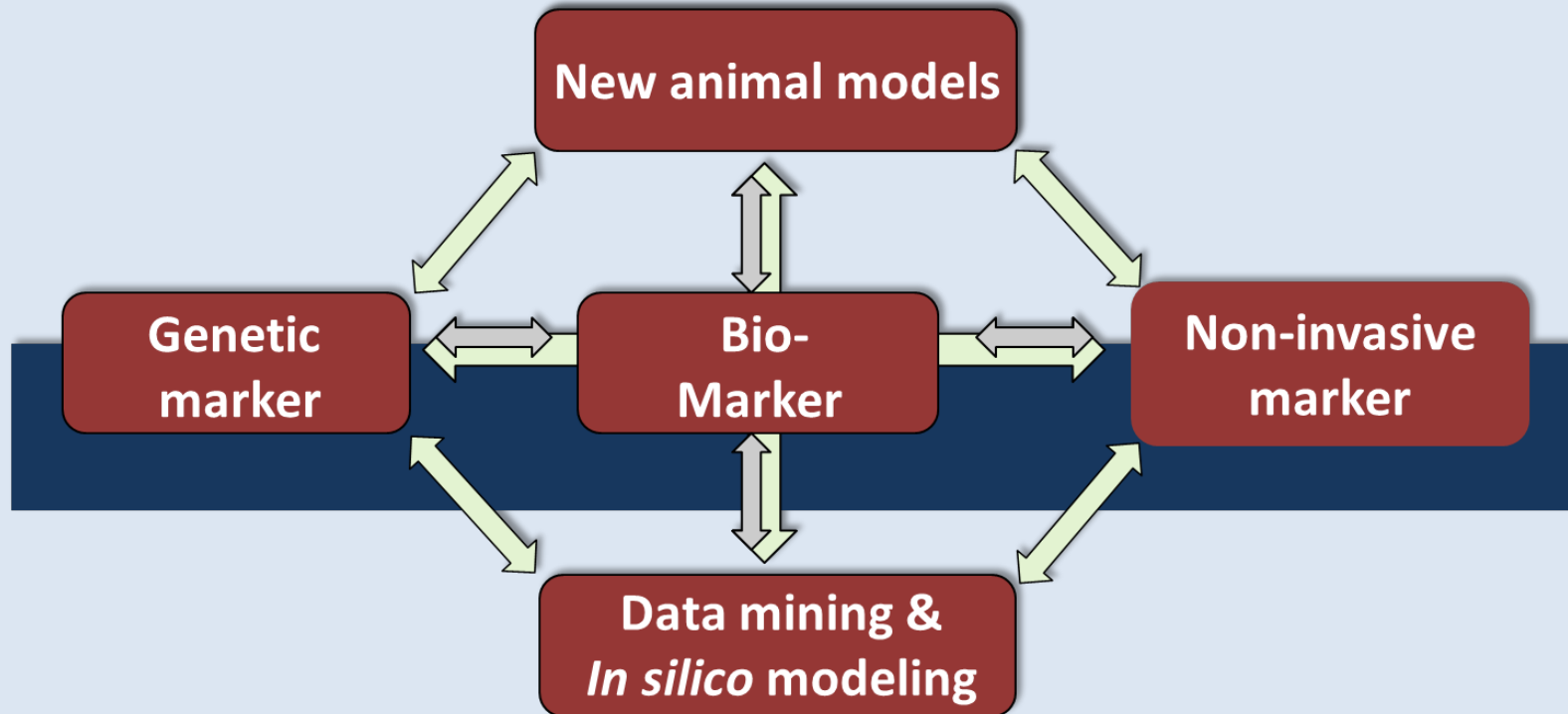


Innovative Medicines Initiative



surrogate markers for
micro- and macro-vascular
hard endpoints for
innovative diabetes tools

SUMMIT Surrogate markers for micro- and macro-vascular hard endpoints for innovative diabetic tools



SUMMIT: A UNIQUE ENTERPRISE

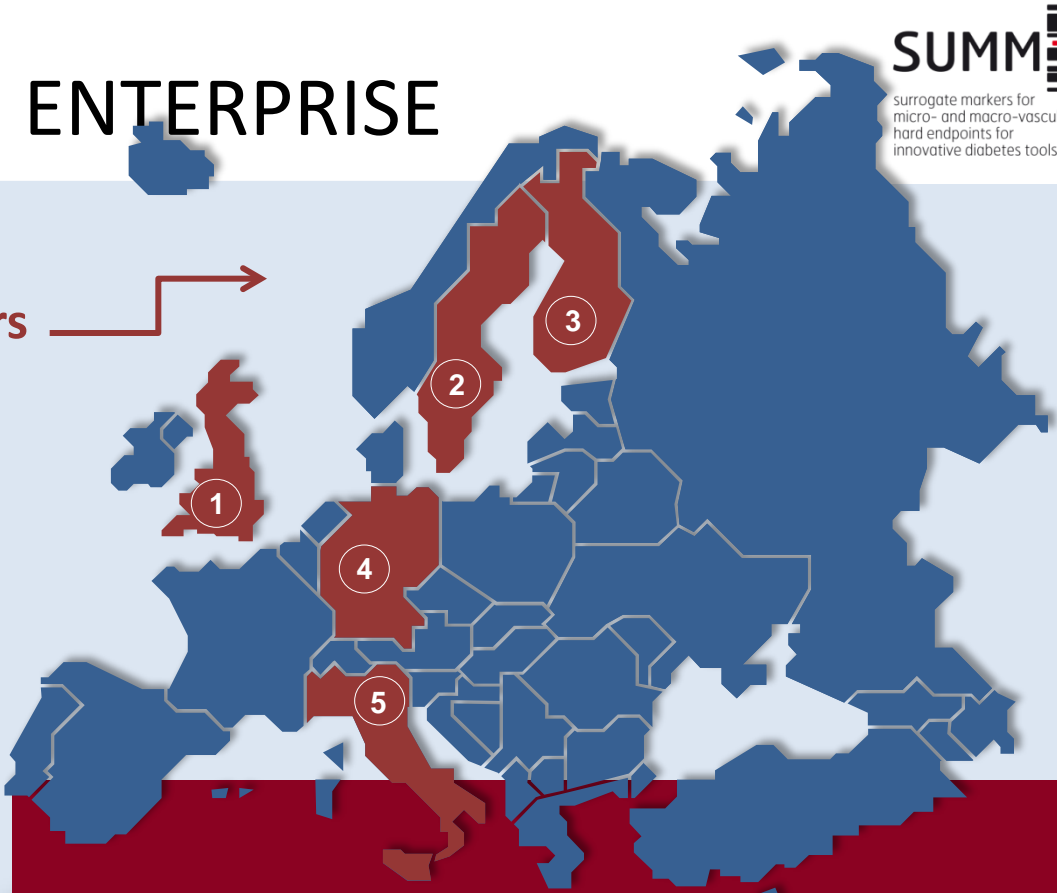
26
Partners

19 academic centers

1 SME (BC Platforms)

6 pharmaceutical companies

- Boehringer Ingelheim
- Eli Lilly
- AstraZeneca
- Hoffmann-La Roche
- Sanofi-Aventis (NEW!)
- Pfizer (NEW!)



€ 32,6
Mio.

€ 14,0 IMI

€ 14,1 EFPIA

€ 4,5 Academia

[Academic centers]

- 1 University of Cambridge
 University of Oxford
 University of Dundee
 University of Exeter
 University of Edinburgh
- 2 University of Lund
 Karolinska Institute,
 Stockholm
 University of Gothenburg

- 3 Folkhälsan Institute, University of Helsinki
 University of Eastern Finland
 University of Turku
 National Institute for Health and Welfare,
 Helsinki
- 4 Helmholtz Centre Munich
- 5 University of Padova
 University of Pavia
 University of Pisa
 Catholic University Rome
 Mario Negri Institute Bergamo
 University of Florence

Three IMI platforms

THE IMI DIABETES PLATFORM: FACTS & FIGURES



SUMMIT
surrogate markers for
micro- and macro-vascular
hard endpoints for
innovative diabetes tools



**SURROGATE MARKERS FOR
MICRO- AND MACROVASCULAR
HARD ENDPOINTS FOR
INNOVATIVE DIABETES TOOLS**

imidia
European combined excellence
in diabetes research



**IMPROVING BETA-CELL FUNC-
TION AND IDENTIFICATION OF
DIAGNOSTIC BIOMARKERS FOR
BETTER TREATMENT**

DIRECT
DIABETES RESEARCH ON PATIENT STRATIFICATION



**DIABETES RESEARCH ON
PATIENT STRATIFICATION**



START DATE	01/09/2009	01/02/2010	01/02/2012
DURATION	60 months	60 months	84 months
NO. PART.	26 (19/6/1)	21 (12/8/1)	25 (21/4/0)
RES. EFPIA	14.1 Mio	16.7 Mio	16.5 Mio
FUNDING IMI	14.0 Mio	7.1 Mio	21.4 Mio
RES. ACADEMIA	4.5 Mio	2.1 Mio	5.2 Mio
TOTAL BUDGET	32.6 Mio	25.9 Mio	43.1 Mio

www.imi-summit.eu

www.imidia.org

www.direct-diabetes.org